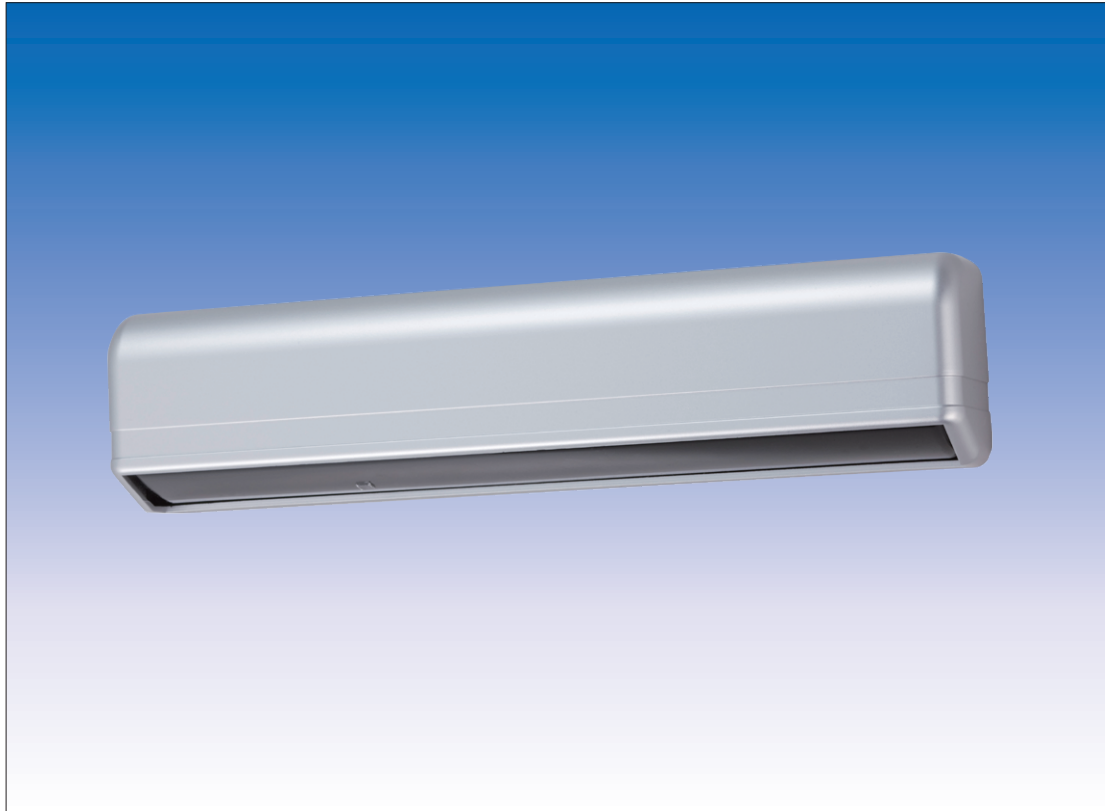


STATIONARY DETECTION AUTO DOOR SENSOR SHA-4701 (SILVER)



BEST SUITABLE FOR THE SHEET SHUTTER 4.5X4.5M !
HIGH-DENSITY DETECTION PATTERN 60 SPOTS
FINE TUNING OF DETECTION AREA SETTING

● 1ST ZONE ELIMINATION ● ANTI SHUTTER VIBRATION FUNCTION ● INSECT/SNOW PROOF

MAXIMUM INSTALLATION HEIGHT 4.7M

Can be installed at 4.5x4.5M sheet shutter with safer function of shutterway detection

HIGH-DENSITY DETECTION PATTERN 60 SPOTS

Running to the shutter or oblique reach to the shutter can be prevented at 2.0M-4.7M installation height.

FINE TUNING OF DETECTION AREA SETTING

Each single zone of Horizontal/Vertical can be eliminated which enables high-density and fine tuning of detection area setting

SNOW-PROOF FUNCTION

Snow mode can be on/off by dip switch. When it is on, the snow mode level automatically changes according to climate conditions.

7 COLORS DETECTION ZONE INDICATION

Helps easy detection pattern setting.

USER FRIENDLY FUNCTIONS

* 6 frequency selection to avoid cross talk with neighbouring sensors.

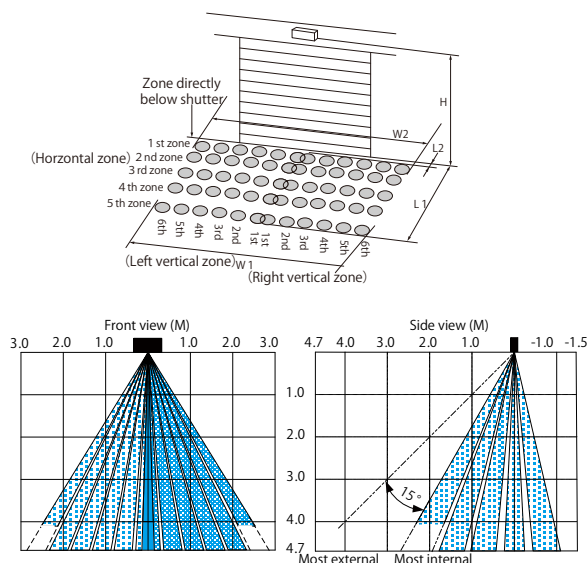
* Self- diagnosis function

* Interlock functions

* Vibration proof function

AUTO DOOR SENSOR (PHOTOELECTRIC BEAM ACTIVE SENSOR)

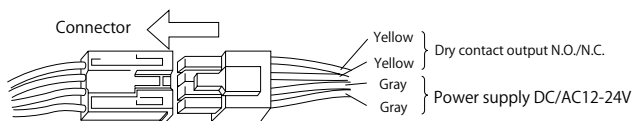
DETECTION SPOTS



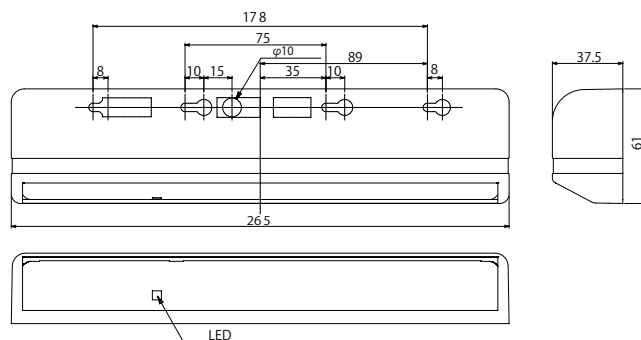
| Detection area | | (mm) | | | | | | | |
|-----------------------------|--------|--------|--------|-----|-----------------------------|--------|--------|-------|--|
| For the most external range | | | | | For the most internal range | | | | |
| H | W1 | W2 | L1 | L2 | W1 | W2 | L1 | L2 | |
| 200 0 | 259 0 | 245 0 | 186 0 | 100 | 218 0 | 236 0 | 113 0 | -500 | |
| 250 0 | 323 0 | 306 0 | 233 0 | 100 | 272 0 | 295 0 | 142 0 | -620 | |
| 300 0 | 388 0 | 368 0 | 279 0 | 100 | 327 0 | 354 0 | 170 0 | -750 | |
| 350 0 | 453 0 | 429 0 | 326 0 | 100 | 381 0 | 413 0 | 198 0 | -870 | |
| 400 0 | 518 0 | 490 0 | 372 0 | 100 | 436 0 | 472 0 | 226 0 | -1000 | |
| 470 0 | (6080) | (5760) | (4370) | 100 | (5120) | (5550) | (2670) | -1170 | |

※ Actual detection area varies according to people's outfit materials, entering speed, floor stuff, floor color.

WIRING



EXTERNAL DIMENSIONS (Unit: mm)



SPECIFICATIONS

| | |
|------------------------|---|
| Model name | AUTO DOOR SENSOR |
| Model No. | SHA-4701 |
| Detection system | Near infrared beam |
| Power supply | AC/DC 12 ~24V ±10% |
| Power consumption | AC12V : 2.5VA DC12V : 140mA AC24V : 2.5VA DC24V : 65mA |
| Installation height | 2m~4.7m |
| LED | 7 colors indication |
| Signal output | Dry contact N.O./N.C. DC50V 0.1A Resistive load |
| Output time | 0.5 sec. |
| Installation site | Indoor, Semi-outdoor, Wall mount |
| Stationary timer | 1・2・3 Zone : 2 sec. 10 sec. 30 sec. ∞/ 4・5 Zone : 2 sec. 10 sec. |
| Sensitivity adjustment | By volume switch |
| Vertical adjustment | (1) Manual adjustment : 15° adjustable (2) Dip switch adjustment : 3/4/5 Zone elimination |
| Horizontal adjustment | (1) Dip switch adjustment : 1 Zone elimination (2) Dip switch adjustment : 2/3/4/5/6 Zone adjustment |
| 1st Zone setting | (1) Monitoring below shutter : AUTO/FORCED/DISABLED/NORMAL In case of AUTO/FORCED, the sensor has learning function. (2) Monitoring below shutter when output is OFF : ON/OFF |
| Height setting | Selectable 2.0-3.4M/3.4-4.7M |
| Snowproof | (1) Proof level 0/1/2/3 (High figure is stronger proof) (2) AUTO/NORMAL AUTO→ At 10°C inside of the model, automatically switches. Manual→ Regardless temperature, it operates at set level. |
| Frequency | Selectable 6 frequencies |
| Insectproof | ON/OFF |
| Anti-vibration | ON/OFF |
| Interlock function | ON/OFF |
| Ambient temperature | -20°C ~ +60°C |
| Weight | 290g |
| Color | Silver |

Limited Warranty :

TAKEX products are warranted to be free from defects in material and workmanship for 12 months from original date of shipment. Our warranty does not cover damage or failure caused by Acts of God (including inductive surge by lightning), abuse, misuse, abnormal usage, faulty installation, improper maintenance or any repairs other than those provided by TAKEX. All implied warranties with respect to TAKEX, including implied warranties for merchantability and implied warranties for fitness, are limited in duration to 12 months from original date of shipment. During the Warranty Period, TAKEX will repair or replace, at its sole option, free of charge, any defective parts returned prepaid. Please provide the model number of the products, original date of shipment and nature of difficulty being experienced. There will be charges rendered for product repairs made after our Warranty period has expired.



In Japan

Takenaka Engineering Co., Ltd.
83-1, Gojo-sotokan, Higashino,
Yamashina-ku, Kyoto 607-8156, Japan
Tel : 81-75-501-6651
Fax : 81-75-593-3816
<http://www.takex-eng.co.jp>

In the U.S.

Takex America Inc.
3350 Montgomery Drive, Santa
Clara, CA 95054, U.S.A.
Tel : 408-747-0100
Fax : 408-734-1100
<http://www.takex.com>

In Australia

Takex America Inc.
4/15 Howleys Road Notting Hill,
3168 Victoria, Australia
Tel : 03-9544-2477
Fax : 03-9543-2342

In the U.K.

Takex Europe Ltd.
Takex House, Aviary Court, Wade Road,
Basingstoke, Hampshire. RG24 8PE, U.K.
Tel : (+44) 01256-475555
Fax : (+44) 01256-466268
<http://www.takexeurope.com>